



PROJECT		REF		REV	ITEM CODE	
LOCATION		DATE			PAGE	

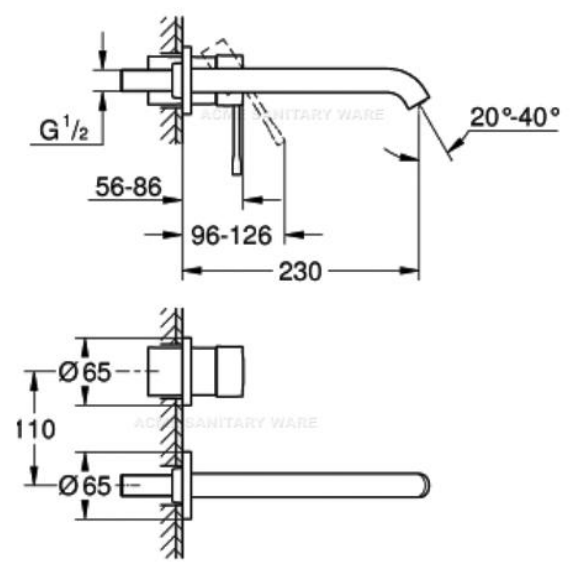
## SANITARY WARE SPECIFICATION SHEET

Item Descriptions	GROHE (Germany) "Essence" Brushed warm sunset wall mounted 2-hole basin mixer L-size; nominated flow rate <b>5.2 L/min</b> in WELS <b>Grade 1</b> ; Registration No. TM 18-0061
Model	19967DL1 (Mixer) 23571000 (Concealed Body)
Finish	Brushed Warm Sunset
Country of origin	Germany
Manufacturer	GROHE Limited
Supplier	Acme Sanitary Ware Co. Ltd Mr. Eric Wong/ Mr. Don Yuen
Contact Tel/Fax	(852) 2388-7171 / (852) 2710-8012
E-mail	acme@acmesanitary.com.hk
Website	www.acmesanitary.com.hk

Illustration/ Drawing

Dynamic flow pressure (kPa)	50	150	250	350	500
Flow rate (l/min)	3.10	4.95	5.30	5.40	5.43

**Essence**  
**Two-hole basin mixer**  
**L-Size**  
 wall mounted  
 set for final installation for 23 571 000  
 without concealed body  
 metal escutcheon  
 metal lever  
**GROHE StarLight** chrome finish  
**GROHE EcoJoy** mousseur 5.7 l/min  
**GROHE AquaGuide** adjustable mousseur  
 center distance 110 mm  
 projection 230 mm



- Colour options:**
- 001 | StarLight Chrome
  - DC1 | SuperSteel
  - DA1 | Warm Sunset
  - A01 | Hard Graphite
  - AL1 | Brushed Hard Graphite
  - GL1 | Cool Sunrise
  - GN1 | Brushed Cool Sunrise
  - DL1 | Brushed Warm Sunset
  - BE1 | Polished Nickel
  - EN1 | Brushed Nickel

\* All information of the above is for the reference only. No prior notice is made if any changes.

註冊號碼 (Registration No.): TM 18-0061



## 自願參與用水效益標籤計劃 - 水龍頭 Voluntary Water Efficiency Labelling Scheme - Water Taps

Certificate



註冊證書

Registration



茲證明

This is to certify that

將下列水龍頭在本計劃內註冊：  
has registered the following water tap under this scheme :

- 牌子 / Brand : GROHE
- 型號 / Model : 23571000 + 19967XX1
- 種類 / Type : Mixing
- 原產地 / Country or Region Origin : Germany (Body)

在用水效益標籤上展示的標誌

*Symbolic Presentation on the Water Efficiency Label*



滴水點

*Water droplet(s)*

用水效益類別

*Water Efficiency Grade*

1

耗水量

*Water Consumption*

5.2

公升/分鐘

*litres/minute*

簽發日期:

**Date of Issue: 12 March 2018**



水務署

Water Supplies Department



水務署署長(周世威代行)  
for Director of Water Supplies